

WANT TO LEARN MORE?

You can learn more on your Town's website at:

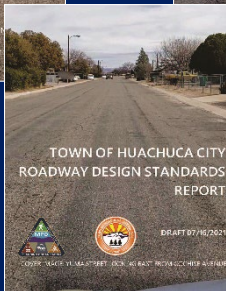
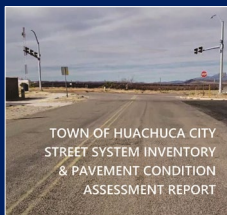
<https://huachuacityaz.gov/home>

or on the Sierra Vista MPO's website:
www.svmpto.org.

Contact the Town or use the SVMPO Contact Us form if you have any questions or would like a printed copy of the Final Transportation System Report.

This Street Inventory and Assessment is valuable information that will help Town Council and Town Staff prioritize needs, apply for grants, and qualify for regional studies or a regional construction project.

You may also talk with your Mayor, Council members, or Town staff about the major findings and recommendations of this Study. They can be reached at Town Hall located at 500 North Gonzales Boulevard, Huachuca City, AZ 85616, or by phone at 520-456-1354.



STREET INVENTORY & ASSESSMENT STUDY

WORK COMPLETED

Three Working Papers were completed, along with two Map Books, and a Final Report. Information provided includes:

- Existing Street Conditions
- Traffic Counts by Roadway
- Conceptual Roadway Design Improvement Standards
- Key Street Assessments
- Funding Strategies

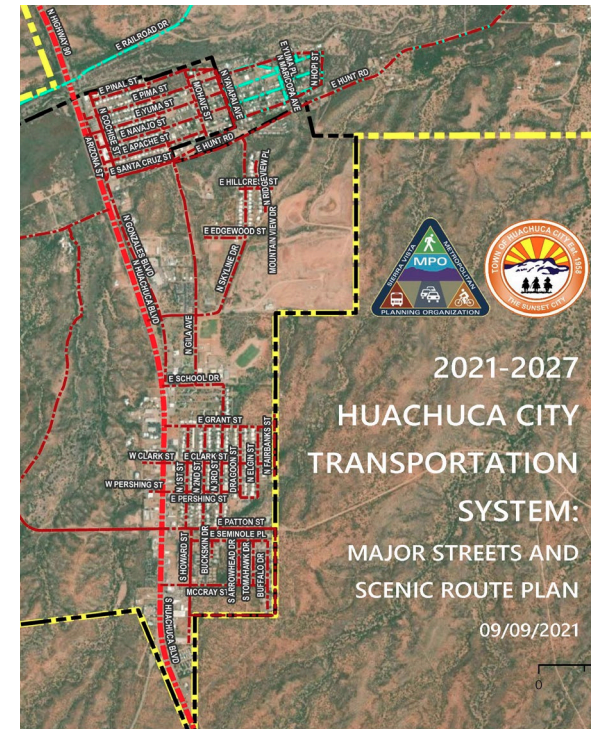
NEXT ACTION ITEMS

Town Council will work with staff and regional, state, and federal agencies, along with the City of Sierra Vista and Cochise County, to address areas needing improvements, identify funding opportunities, and implement the Final Report recommendations.

TIMEFRAME GOALS

Recommendations will be phased in over time with a goal of implementing many of these before the next Huachuca City General Plan Update in the year 2027.

Routine maintenance for local roads is limited by the existing Town funding revenues of about \$165,000 a year. The Town's prioritized projects will require funding partners to construct. The prioritized projects are also identified in the Sierra Vista MPO 2050 Long-Range Transportation Plan for future consideration for available regional funding.



The Town worked with the Sierra Vista Metropolitan Planning Organization (SVMPO) and consultants at Rick Engineering and Kimley-Horn to complete a study of the Town's streets. **The Final Report was accepted by Town Council on September 9, 2021.** This study, and its reports, provide information to help the Town prioritize street improvements so that **you** can safely travel to where you need and want to go.

DID YOU KNOW?

- 14.7** miles of public streets in your Town
- 2.2** miles of state highway 90 is within your Town limits
- 2.7** square miles is the size of your Town
- 1,736** population estimate for 2019
- 4,275** average elevation of the Town

INVENTORY & ASSESSMENT

This Transportation System Plan/Final Report met or exceeded the adopted May 2017 Huachuca City General Plan Circulation Recommendations and includes:

- ✦ Description of Existing Transportation Network
- ✦ Existing Street Infrastructure Conditions
- ✦ Key Transportation Collector Streets
- ✦ Town Street Project Priorities
- ✦ Future Scenic Pathways
- ✦ Major Findings and Recommendations
- ✦ Appendices / Working Papers and Maps.

STUDY RECOMMENDATIONS

The Final Report identified a number of recommendations for the Town to consider and undertake in the next five to twenty-five years, as funding and resources allow. These recommendations are not mandated activities but are strongly desired to be accomplished as part of the ongoing improvement of the Town's transportation system as envisioned by the Town's General Plan, due to be updated in the year 2027.

- ✦ Establish an on-going system to maintain data collection for pavement condition, traffic counts, utility locations, and crash information.
- ✦ Use a pavement condition rating system to prioritize roadway improvements.
- ✦ Use flood hazard area information to guide future growth and development.
- ✦ Pursue projects to solve identified local drainage issues.
- ✦ Consider the adoption of a Huachuca City Street Design Construction Standard.

- ✦ Conduct a walking and biking facility assessment.
- ✦ Pursue proactive right of way acquisition for prioritized projects and right of way dedication/land swaps on Highway 90.
- ✦ Undertake a Highway 90 Corridor Study.
- ✦ Develop a funding strategy for effective use of Highway User Revenue funds.
- ✦ Use of a selection of cost-effective pavement rehabilitation strategies.
- ✦ Partner with agencies, non-profits, and private business to leverage funding for larger projects using the Town funds.
- ✦ Coordinate with Cochise County on fixing storm drainage problems from McCray to the north side of Patton (green belt area).
- ✦ Share 'lower' Huachuca City area concerns formally with Cochise County for future phased improvements to address concerns in advance of any consideration of annexation.

PRIORITIZED PROJECTS

This Study identified four top prioritized projects for potential regional or state partnership to fund and construct in the near and long-term timeframes.



Skyline Drive. Improvement of Skyline Drive, from Highway 90 to the landfill entrance, with a heavy truck pavement

section, new curb and gutter, and drainage improvements.

School Drive. Improvement of School Drive, from Highway 90 to Gila Avenue, with pavement reconstruction, curb and gutter, sidewalks, and drainage improvements.

Gila Avenue. Improvement of Gila Avenue, from School Drive to Skyline Drive, with pavement reconstruction, curb and gutter, sidewalks, and drainage improvements.

Skyline Pathway. Construct a new shared-use path from Gila Avenue to Edgewood Street along with a culvert extension to accommodate the path.

SAFETY MESSAGE TO OUR RESIDENTS

The Town Council and Project Study Teams would like to advise Town residents to *exercise all due caution when entering or exiting onto or off of State Highway 90*. These intersections with your State Highway system are the areas of most of the crashes occurring within the Town boundaries.

Speeding and failure to yield, combined with driving distracted, tired, on medication, or impaired are the primary causes of crashes in our region. Although results of this study showed that on average most residents drive at or below the speed limit within the Town, residents are encouraged to continue to follow all roadway advisory and speed limit signs so that you may travel where you need to go and back home safely.



**JUST DRIVE
STAY ALIVE!**